



SIGNATURE
ESTATES

2 Pauling Close

Aylesbury, HP22 5PH

£3,000 Per Calendar Month

SPACIOUS FAMILY HOME IN QUIET LOCATION!! The cul de sac position of the property within this small development makes it a safe and family friendly environment. Aston Clinton Primary School and Park are a few minutes walk away. The size and scope of the accommodation is ideal both growing or already grown families. Available from June 2026, this is a lovely family home presented in very good order with off street parking and a garage. Call Signature today to arrange your viewing 01442 976 161

- Detached Family Home
- Five Bedrooms
- En- Suite to Master
- Three Reception Rooms
- Private Rear Garden
- Off Street Parking & Garage
- Cul De Sac Location
- Available beginning of June

Viewing

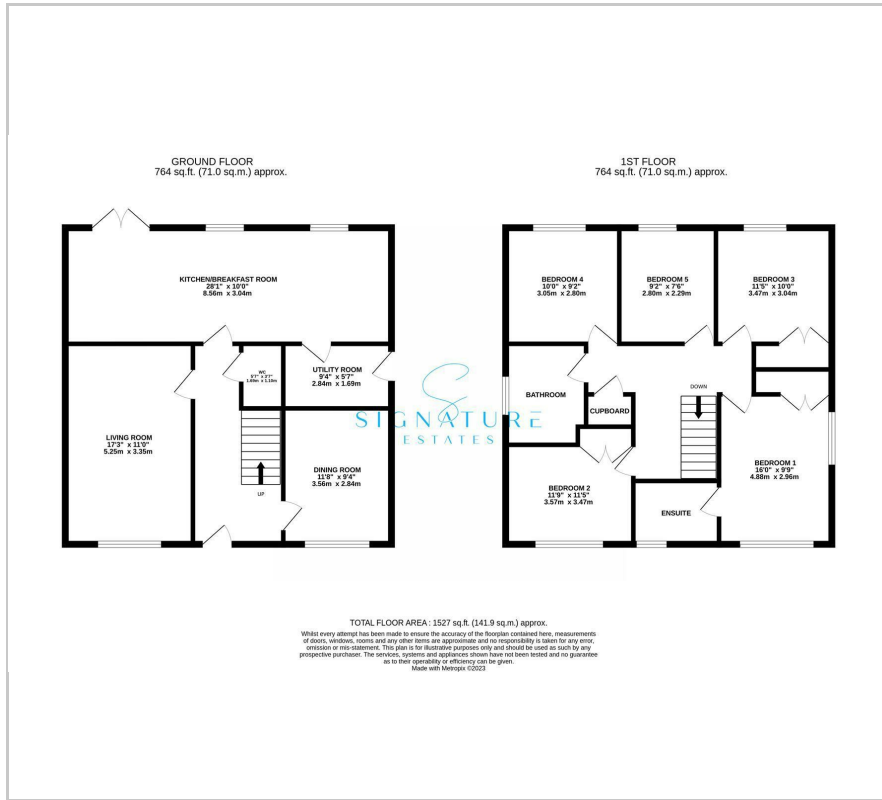
Please contact our Bovingdon Office on 01923262666 if you wish to arrange a viewing appointment for this property or require further information.



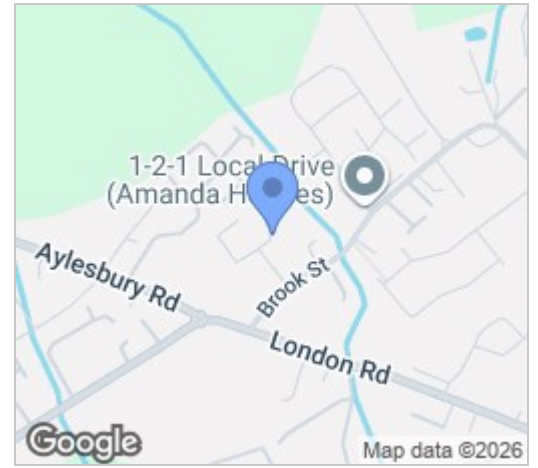
SIGNATURE

ESTATES

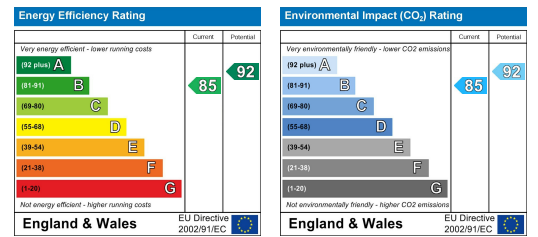
Floor Plan



Area Map



Energy Efficiency Graph



These particulars, whilst believed to be accurate are set out as a general outline only for guidance and do not constitute any part of an offer or contract. Intending purchasers should not rely on them as statements of representation of fact, but must satisfy themselves by inspection or otherwise as to their accuracy. No person in this firm's employment has the authority to make or give any representation or warranty in respect of the property.